

## Luca Lanzi

MALÌA

Sculptures and Drawings

8 September - 20 October 2018



**lorch+seidel contemporary**

lorch+seidel galerie | Tucholskystr. 38 | T + 49. 30. 978 939 35 | [info@lorch-seidel.de](mailto:info@lorch-seidel.de) | di-fr tue-fri 13-19 h  
contemporary art | D-10707 Berlin | M + 49. 176. 235 265 65 | [www.lorch-seidel.de](http://www.lorch-seidel.de) | sa sat 12-18 h



LUCA LANZI

*Feticcio Gea*

Sculpture | one-of-a-kind piece

Terracotta and gesso

33 x 30 x 26 cm | 13 x 11.8 x 10.2 inches | H x L x D

2018



*Gea* ist die italienische Bezeichnung für *Gaia*, die Göttin der Erde in der griechischen Mythologie. Trotz ihrer kleinkindhaften Züge strahlt Luca Lanzis Fetisch-Puppe Erhabenheit und Ruhe aus, aber auch Bereitschaft und Erwartung. Ihr Körper ist vereinfacht, alles ist abgerundet. Hände und Füße fehlen. Mund, Brustwarzen und Hinterkopf treten plastisch hervor. Die Terracotta-Oberfläche ist mit einem Schleier aus Gips überzogen. Die weiß schimmernde Farbe verleiht der Puppe Distanz und Reinheit. Der puderige Effekt macht die Poren des gebrannten Tons und die feinen Ritz-Zeichnungen darin sichtbar. Die Lotos-Mandalas auf den Armen symbolisieren Leben und Harmonie und erinnern an die Tradition der Henna-Körperbemalung. Die geriffelten Linien um die Hüften könnten Perlenschnüre andeuten, mit denen afrikanische Frauen seit jeher ihre Weiblichkeit betonen. Der Fortsatz am Hinterkopf könnte als Bantu-Knoten-Frisur interpretiert werden. Im positiven Sinne künstlerischer Aneignung überträgt Luca Lanzi diese Zitate aus anderen Kulturen in seine eigene Formsprache und gibt seiner Puppe dadurch eine geheimnisvolle exotische Aura.

*Gea* is the Italian version of *Gaia*, the primal Earth goddess in Greek mythology. In spite of her infantine character, Luca Lanzi's fetish doll emanates dignity and serenity, but also willingness and expectancy. Her body is simplified; everything is rounded. Missing are hands and feet. Mouth, nipples and the back of the head bulge outward. The terracotta surface is veiled with a glaze of white gesso, a shimmering tone that bestows distance and purity on the figurine. The powdery effect highlights the pores of the fired clay and the drawings finely etched onto it. The lotus mandalas on the arms symbolize life and harmony and are reminiscent of the tradition of henna body painting. The rippling lines around the hips may suggest the waist beads used by African women from time immemorial to accentuate their femininity. The extension on the back of the head is interpretable as a kind of Bantu knot hairstyle. Through this positive act of artistic appropriation, Luca Lanzi integrates citations from other cultures into his own form language, imbuing his doll with an enigmatic and exotic aura.



LUCA LANZI

*Piccolo Monumento Equestre*

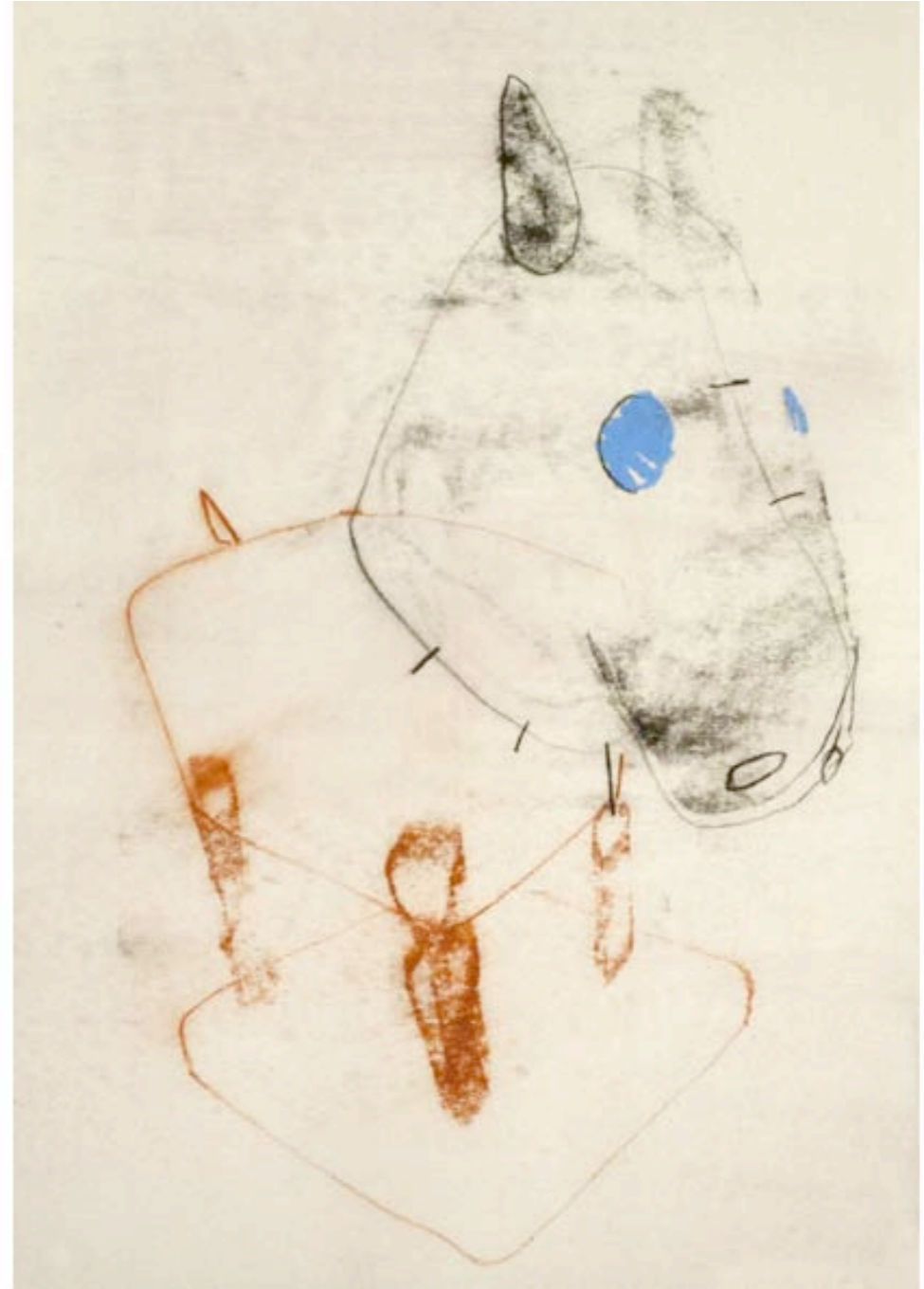
Drawing

Mixed media on paper

Sheet | 34,5 x 24,5 cm | 13.6 x 9.6 inches | H x W

Frame | 41 x 31 cm | 16.1 x 12.2 inches | H x W

2013



LUCA LANZI

*Sauro*

Sculpture

Terracotta

Animal | 58 x 50 x 23 cm | 22.8 x 19.7 x 9.1 inches | H x L x W

Pedestal | 67 x 38 x 31 cm | 26.4 x 15 x 12.2 inches | H x L x W

2013



LUCA LANZI

*Sauro*

Sculpture

Terracotta

Animal | 58 x 50 x 23 cm | 22.8 x 19.7 x 9.1 inches | H x L x W

Pedestal | 67 x 38 x 31 cm | 26.4 x 15 x 12.2 inches | H x L x W

2013



LUCA LANZI

*Girandola*

Drawing

Mixed media on paper

Sheet | 100 x 140 cm | 39.4 x 55.1 inches | H x W

Frame | 114 x 154 cm | 44.9 x 60.6 inches | H x W

2016



LUCA LANZI

*Girandola*

Drawing

Mixed media on paper

Sheet | 100 x 140 cm | 39.4 x 55.1 inches | H x W

Frame | 114 x 154 cm | 44.9 x 60.6 inches | H x W

2016





LUCA LANZI

*Feticcio Sonaglio*

Sculpture | one-of-a-kind piece

Terracotta, gesso, copper wire

44 x 40 x 28 cm | 17.3 x 15.7 x 11 inches | H x L x D

2009



LUCA LANZI

*Ubino*

Drawing

Mixed media on paper

Sheet | 50 x 35 cm | 19.7 x 13.8 inches | H x W

Frame | 57 x 42 cm | 22.4 x 16.5 inches | H x W

2017



LUCA LANZI

*Magica – Little Bird*

Drawing

Mixed media on paper on stretcher

Sheet | 100 x 70 cm | 39.4 x 27.6 inches | H x W

Frame | 112 x 82 cm | 44.1 x 32.3 inches | H x W

2015



LUCA LANZI



*Rebus*

Sculpture | one-of-a-kind piece

Terracotta and gesso

24 x 38 x 23 cm | 9.4 x 15 x 9.1 inches | H x L x D

2016

LUCA LANZI



*Rebus*

Sculpture | one-of-a-kind piece | detail view

Terracotta and gesso

24 x 38 x 23 cm | 9.4 x 15 x 9.1 inches | H x L x D

2016

LUCA LANZI

*Animula*

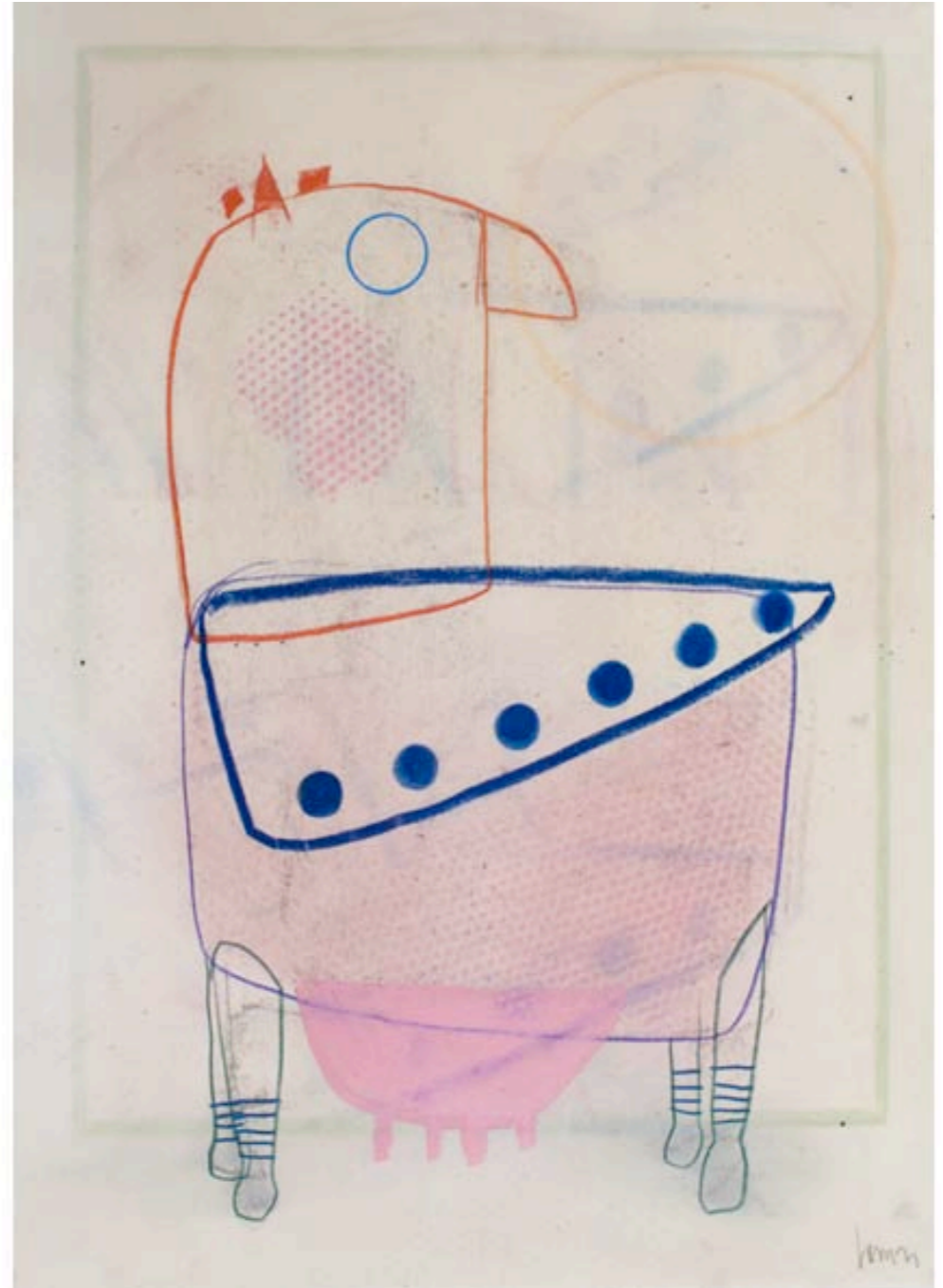
Drawing

Mixed media on paper

Sheet | 50 x 35 cm | 19.7 x 13.8 inches | H x W

Frame | 57 x 42 cm | 22.4 x 16.5 inches | H x W

2017



LUCA LANZI

Gea

Drawing

Mixed media on paper

Sheet | 50 x 35 cm | 19.7 x 13.8 inches | H x W

Frame | 57 x 42 cm | 22.4 x 16.5 inches | H x W

2017



LUCA LANZI

*Totem*

Sculpture | one-of-a-kind piece

Mixed media and gesso on terracotta | 5 terracotta elements + 1 wooden pedestal

Height incl. black pedestal | 250 cm | 98.4 inches | variable ground space

2010





LUCA LANZI



*Apo*

Sculpture | one-of-a-kind piece

Terracotta and gesso

28 x 45 x 22 cm | 11 x 17.7 x 8.7 inches | H x L x D

2016

LUCA LANZI

*Apo*

Sculpture | one-of-a-kind piece | detail view

Terracotta and gesso

28 x 45 x 22 cm | 11 x 17.7 x 8.7 inches | H x L x D

2016



LUCA LANZI

*Cano*

Drawing

Mixed media on paper

Sheet | 50 x 35 cm | 19.7 x 13.8 inches | H x W

Frame | 57 x 42 cm | 22.4 x 16.5 inches | H x W

2017



LUCA LANZI

*Papera*

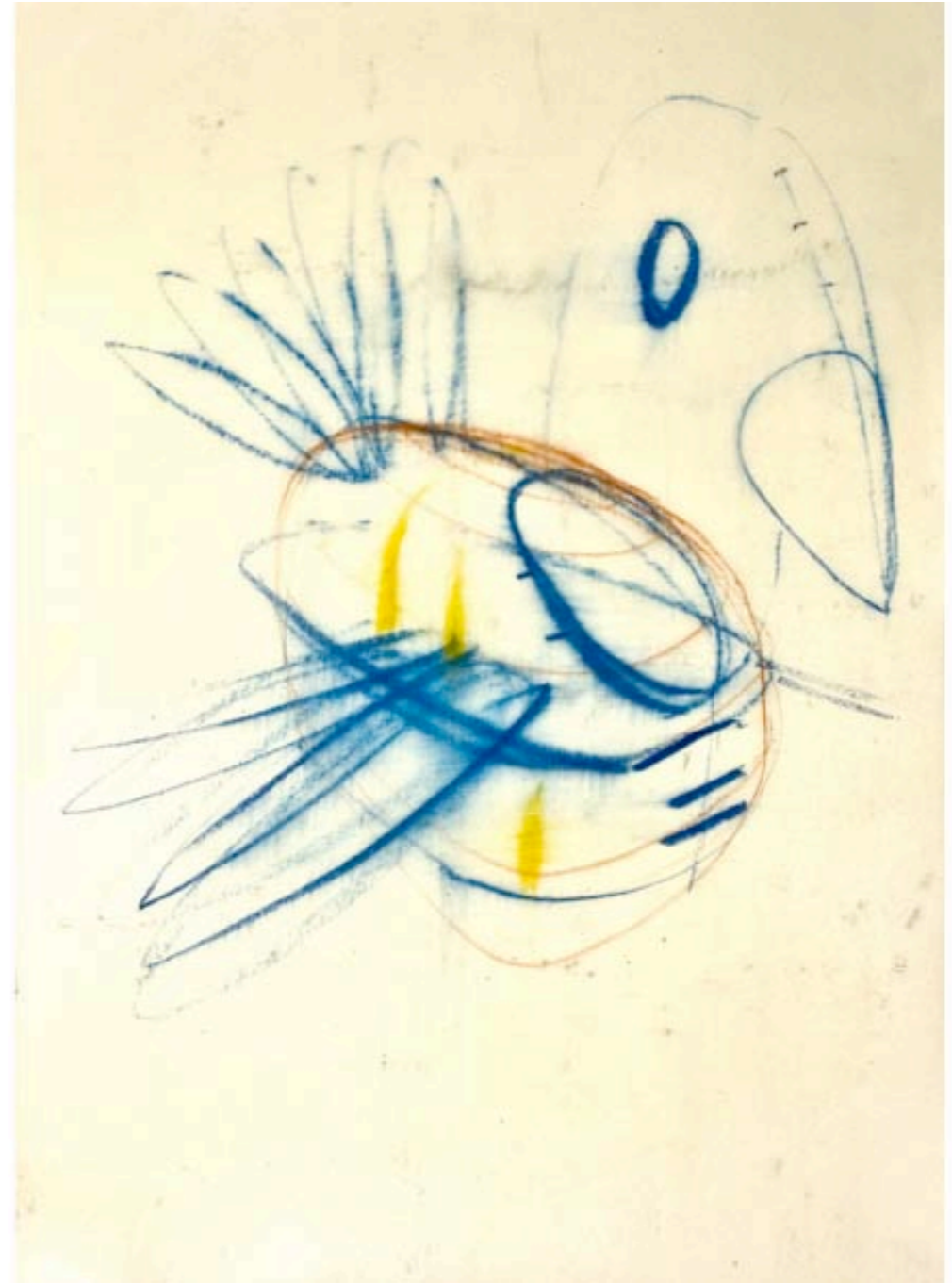
Drawing

Mixed media on paper

Sheet | 50 x 35 cm | 19.7 x 13.8 inches | H x W

Frame | 57 x 42 cm | 22.4 x 16.5 inches | H x W

2011



LUCA LANZI

*Uccellino*

Sculpture | one-of-a-kind piece

Terracotta and gesso

30 x 25 x 25 cm | 11.8 x 9.8 x 9.8 inches | H x L x D

2016



LUCA LANZI

*Uccellino*

Sculpture | one-of-a-kind piece | detail view

Terracotta and gesso

30 x 25 x 25 cm | 11.8 x 9.8 x 9.8 inches | H x L x D

2016



LUCA LANZI

*Ludens*

Sculpture | one-of-a-kind piece

Terracotta, gesso | 1 element

106 x 51 x 32 cm | 41.7 x 20.1 x 12.6 inches | H x L x D

2012



LUCA LANZI

*Feticcio Blue Top*

Drawing

Mixed media on paper

Sheet | 100 x 70 cm | 39.4 x 27.6 inches | H x W

Frame | 112 x 82 cm | 44.1 x 32.3 inches | H x W

2011





LUCA LANZI



*Feticcio Varco*

Sculpture | one-of-a-kind piece

Terracotta and gesso

34 x 31 x 23 cm | 13.4 x 12.2 x 9.1 inches | H x L x D

2018

LUCA LANZI

*Feticcio Scuro*

Sculpture | one-of-a-kind piece

Terracotta and gesso

36 x 30 x 20 cm | 14.2 x 11.8 x 7.9 inches | H x L x D

2016



LUCA LANZI

*Doll Sitting*

Drawing

Mixed media on paper on canvas

Stretcher | 70 x 50 cm | 27.6 x 19.7 inches | H x W

2011



LUCA LANZI

*Macchinina 01*

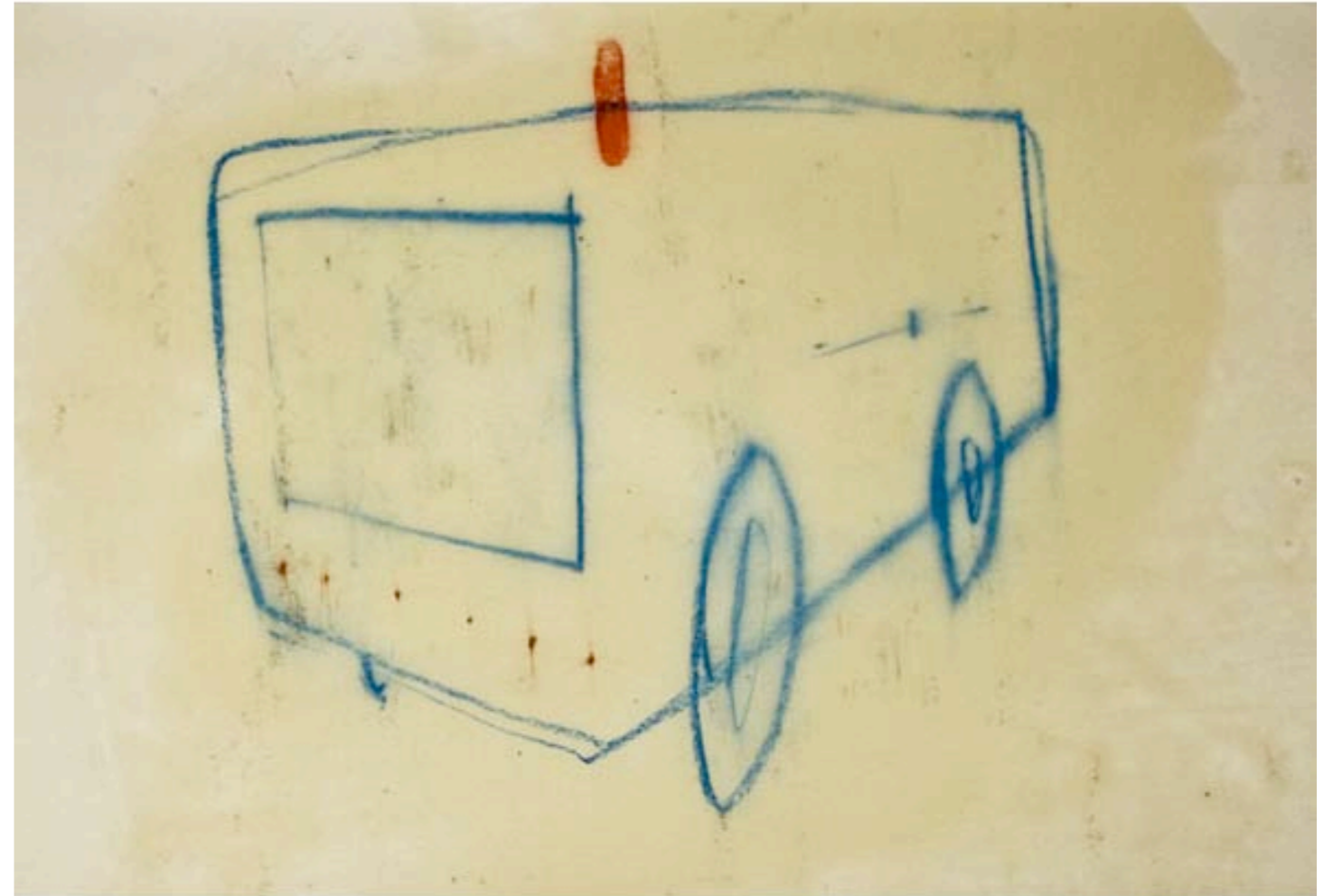
Drawing

Mixed media on paper

Sheet | 35 x 50 cm | 13.8 x 19.7 inches | H x W

Frame | 42 x 57 cm | 16.5 x 22.4 inches | H x W

2011



LUCA LANZI

*Macchinina 02*

Drawing

Mixed media on paper

Sheet | 50 x 35 cm | 19.7 x 13.8 inches | H x W

Frame | 57 x 42 cm | 22.4 x 16.5 inches | H x W

2011



## LUCA LANZI

Luca Lanzi (born in Bologna in 1977) studied at the academies of fine arts in Bologna and Berlin-Weissensee. In 2005, he became a fellow of the Collegio Artistico Venturoli Foundation. Luca Lanzi lives in Bologna.

### recognitions

- 2015 · Finalist | Premio Faenza | MIC - Museo Internazionale della Ceramica d'Arte Contemporanea | Faenza | IT
- 2011 · Finalist | Premio Basi | section drawing | Grosseto | IT

### public collections

- 2018 · Museum Keramion | Frechen/Cologne | DE
- 2011 · Collection of Drawings | Accademia delle Belle Arti | Bologna
- Collection of Contemporary Drawings | City of Modena | IT

### publications

- 2018 · Luca Lanzi. Malia | exhibition catalogue | Keramion Foundation | Frechen/Cologne
- 2016 · Gequälte Puppen | Adrienne Braun | Art Magazin | December edition
- Eikon - Luca Lanzi dans les collections de Bologne | Claudia Casali, Director MIC Faenza
- La Revue de la Céramique et du Verre | May/June edition
- 2015 · Who in the world am I ? | exhibition review by Sylvie Girard
- La Revue de la Céramique et du Verre | edition 203 | July/August edition
- 2014 · La mano e l'idolo | by Flaminio Gualdoni | La ceramica in Italia e nel mondo | June edition
- 2013 · Luca Lanzi | by Wilhelm Werthern | Le Monde Diplomatique | German Edition | September edition
- 2012 · Preview, l'enfant terrible delle fiere berlinesi | by Andrea Ongaro | Artribune
- Spazio Magico | exhibition catalogue | Iorch+seidel | essays by Ian McEwan and Flaminio Gualdoni
- 2010 · Pagine da un Bestiario Fantastico | Galleria Civica | Modena | IT
- Gallerie al Museo | Museo Internazionale delle Ceramiche in Faenza | IT

### solo exhibitions

- 2018 · Malia | Iorch+seidel | Berlin
- 2018 · Malia | Museum Keramion | Frechen/Cologne
- 2017 · He fashioned it and breathed into it of his spirit | Iorch+seidel | Berlin
- 2016 · Luca Lanzi. Eikon | Collezioni Comunali d'Arte | Palazzo d'Accursio | Bologna
- 2015 · Who in the world am I ? (with Silvia Levenson) | Iorch+seidel | Berlin
- 2013 · Last Toy | Iorch+seidel | Berlin
- 2012 · Spazio Magico | Iorch+seidel | Berlin
- Totem | Museo Civico Medievale | Bologna
- 2011 · Il viaggio a cavallo della papera | Iorch+seidel | Berlin
- 2010 · Feticci | L' Ariete artecontemporanea | Bologna
- 2009 · Dolls | Gallery Lilly Zeligman | Naarden | NL
- 2007 · L'anima in gioco | Iorch+seidel | Berlin
- 2006 · Puppen - Feticci | Iorch+seidel | Berlin

### group exhibitions

- 2018 · Positions Berlin Art Fair | with Iorch+seidel
- 2016 · Scope Miami Art Fair | with Iorch+seidel
- Stanze della Meraviglia | Rocchetta Mattei | Grizzana Morandi | Bologna
- Scope Basel Art Fair | with Iorch+seidel
- 2015 · Premio Faenza | MIC - Museo Internazionale della Ceramica d'Arte Contemporanea | Faenza | IT
- 2011 · Lascia un Segno | Pinacoteca Nazionale | Bologna
- 2010 · Gallerie al Museo | Museo Internazionale delle Ceramiche | Faenza | IT
- Pagine da un bestiario fantastico | Galleria Civica | Modena | IT

**Luca Lanzi**

MALÌA

Sculptures and Drawings

8 September - 20 October 2018



**lorch+seidel contemporary**

lorch+seidel galerie | Tucholskystr. 38 | T + 49. 30. 978 939 35 | [info@lorch-seidel.de](mailto:info@lorch-seidel.de) | di-fr tue-fri 13-19 h  
contemporary art | D-10707 Berlin | M + 49. 176. 235 265 65 | [www.lorch-seidel.de](http://www.lorch-seidel.de) | sa sat 12-18 h

