

Julius Weiland

URBAN NATURE

Solo Exhibition

Glass Objects and Paintings

April 14 - May 14, 2022

Venue

temporary showroom at aquabit

Auguststr. 35 | 10119 Berlin



lorch+seidel contemporary

Konstanzer Str. 9 | T + 49 (0)30 978 939 35 | info@lorch-seidel.de

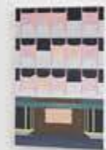
D-10707 Berlin | M + 49 (0)176 235 265 65 | www.lorch-seidel.de

Das Thema von Julius Weilands jüngsten Malereien ist die Architektur der 60er und 70er Jahre - vor allem die sozialistische Moderne und der sogenannte Brutalismus. Die Faszination, die diese Gebäude auslösen, liegt in ihrer konsequenten Formensprache sowie in der gleichzeitigen Überhöhung und ihrem heute befremdlich anmutenden Pathos. Durch die malerische Interpretation ist nicht eindeutig zu erkennen, um welche Epoche es sich handelt. Durch Abstraktion und veränderte Farbgebung entstehen neue Architekturen, die ebenso zeitgenössisch wie auch utopisch sein könnten. Fassaden werden in kleine Farbflächen zerlegt und Räume in dramatischen Perspektiven dargestellt.

Im Kontrast dazu stehen Julius Weilands Glas-Objekte, die durch weiche organische Formen und sanfte Farben auf die natürliche Sphäre verweisen. Es sind Anspielungen auf Stimmungen und Naturphänomene, die sich aber jeder Eindeutigkeit entziehen. Das verbindende Element zu den Malereien scheint die Komposition zu sein - das Zusammenfügen von Formen und Farben zu in sich stimmigen Einheiten. Von innen heraus wachsende Formen verweisen auf die Urhaftigkeit und die ewige Verwandlung der Natur.

Julius Weiland's latest paintings revolve around the architecture of the 1960s and 1970s - in particular socialist modernism and so-called Brutalism. The fascination aroused by these buildings lies in the logical rigor of their design language, as well as in their impression of hyperbole, which appears so alien today. The painterly interpretation does not however betray which era is being invoked. Abstraction and altered coloration give rise to new architectures that seem as contemporary as they seem utopian. Facades are disaggregated into small areas of color, and spaces presented in dramatic perspectives.

Contrasting with all of this are Julius Weiland's glass objects, whose soft organic shapes and mellow colors are reminiscent of the natural world. Allusions to moods and natural phenomena, they elude all semantic explicitness. Linking them element to the paintings, evidently, is composition - the merging of forms and colors into coherent unities. Forms that grow from the inside out are suggestive of the primordial and endlessly transformative powers of nature.



JULIUS WEILAND

Mokka-Eck (am Abend)

Oil on canvas

H x W | 100 x 70 cm | 39.4 x 27.6 inches

2022



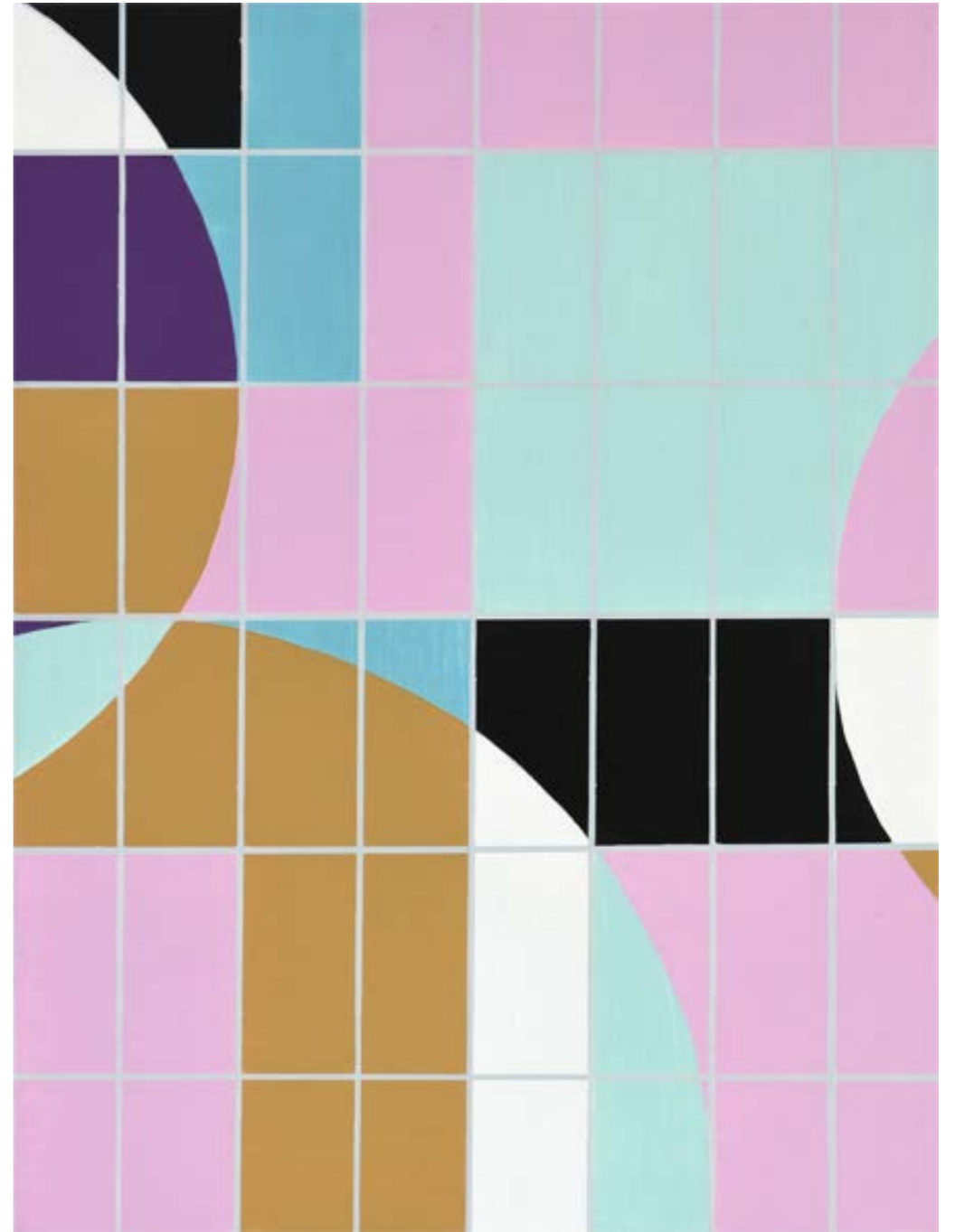
JULIUS WEILAND

Untitled V

Oil on wood

H x W | 50 x 40 cm | 19.7 x 15.7 inches

2022



JULIUS WEILAND

Fassade

Oil on wood

H x W | 30 x 40 cm | 11.8 x 15.7 inches

2022



JULIUS WEILAND

Wandelhalle

Oil on canvas

H x W | 100 x 110 cm | 39.4 x 43.3 inches

2022



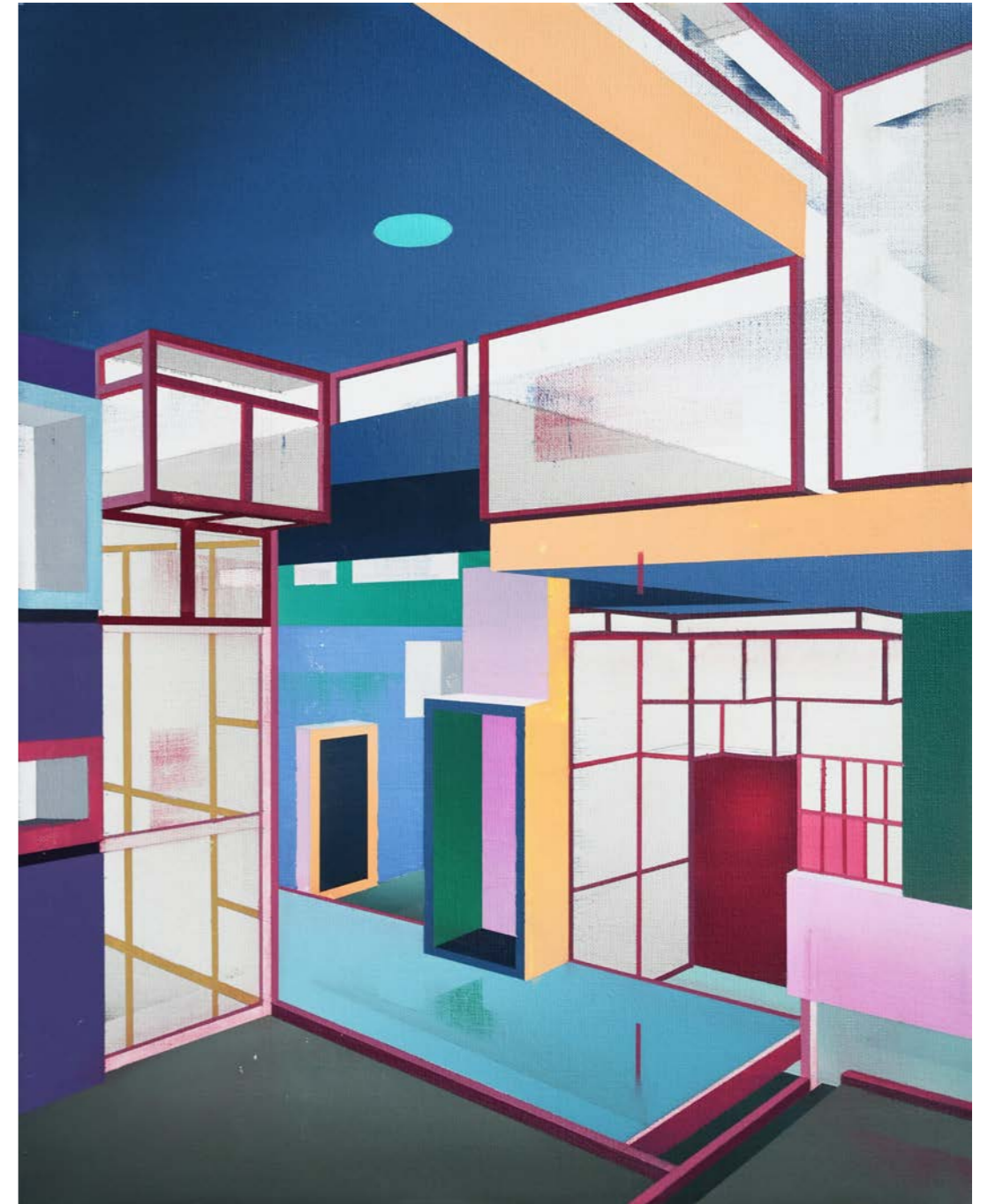
JULIUS WEILAND

Rote Tür

Oil on wood

H x W | 50 x 40 cm | 19.7 x 15.7 inches

2022





JULIUS WEILAND

Konstruktiv

Blown glass, glass color

H x W x D | 38 x 17 x 17 cm | 15 x 6.7 x 6.7 inches

2022



JULIUS WEILAND

Autumn

Blown glass

H x W x D | 27 x 18 x 18 cm | 10.6 x 7.1 x 7.1 inches

2021



JULIUS WEILAND

To Think – Not To Think

Blown glass

H x W x D | 36 x 14 x 14 cm | 14.2 x 5.5 x 5.5 inches

2018





JULIUS WEILAND

Fahrstuhl

Oil on canvas

H x W | 61 x 49 cm | 24 x 19.3 inches

2020



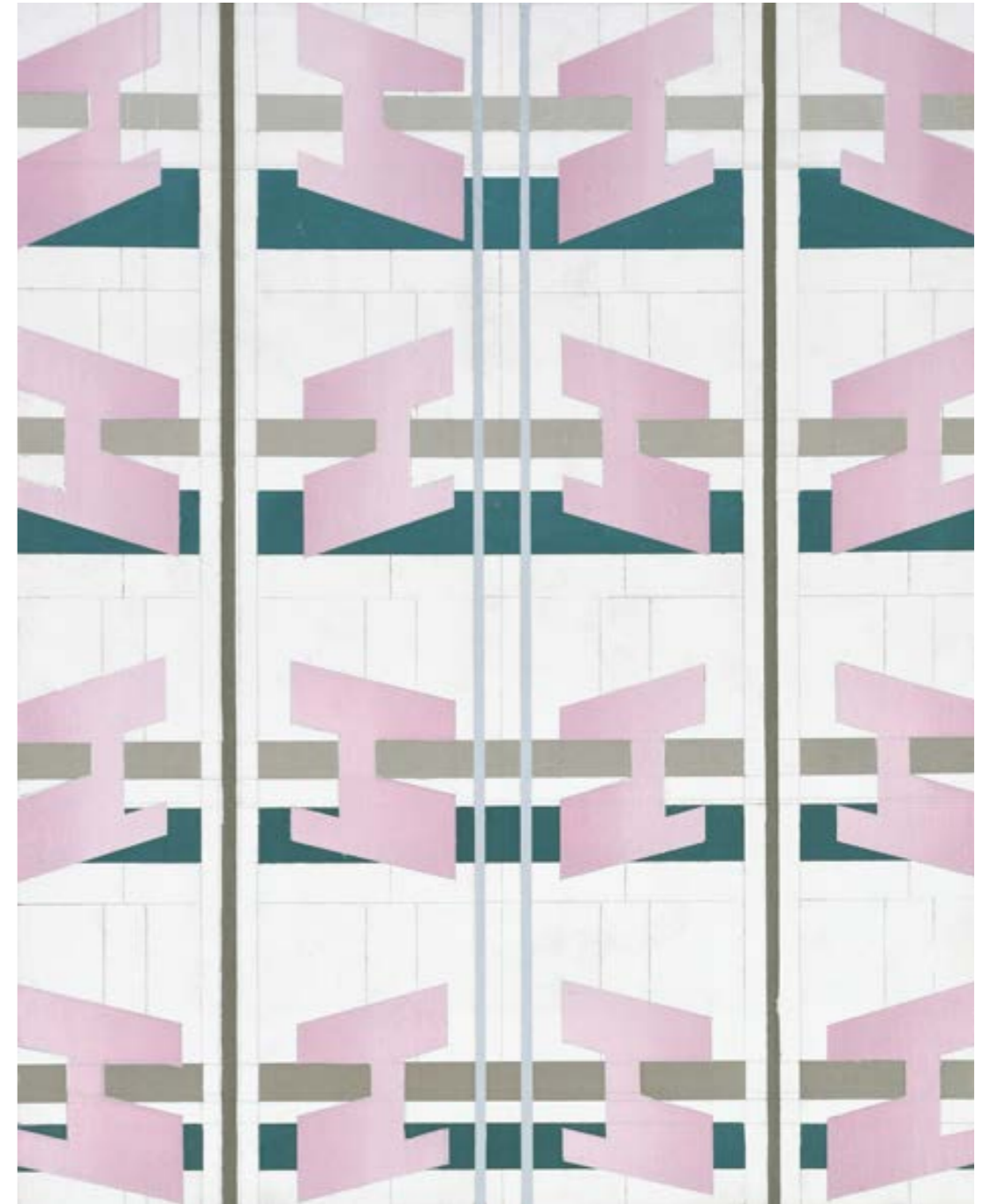
JULIUS WEILAND

Raster I

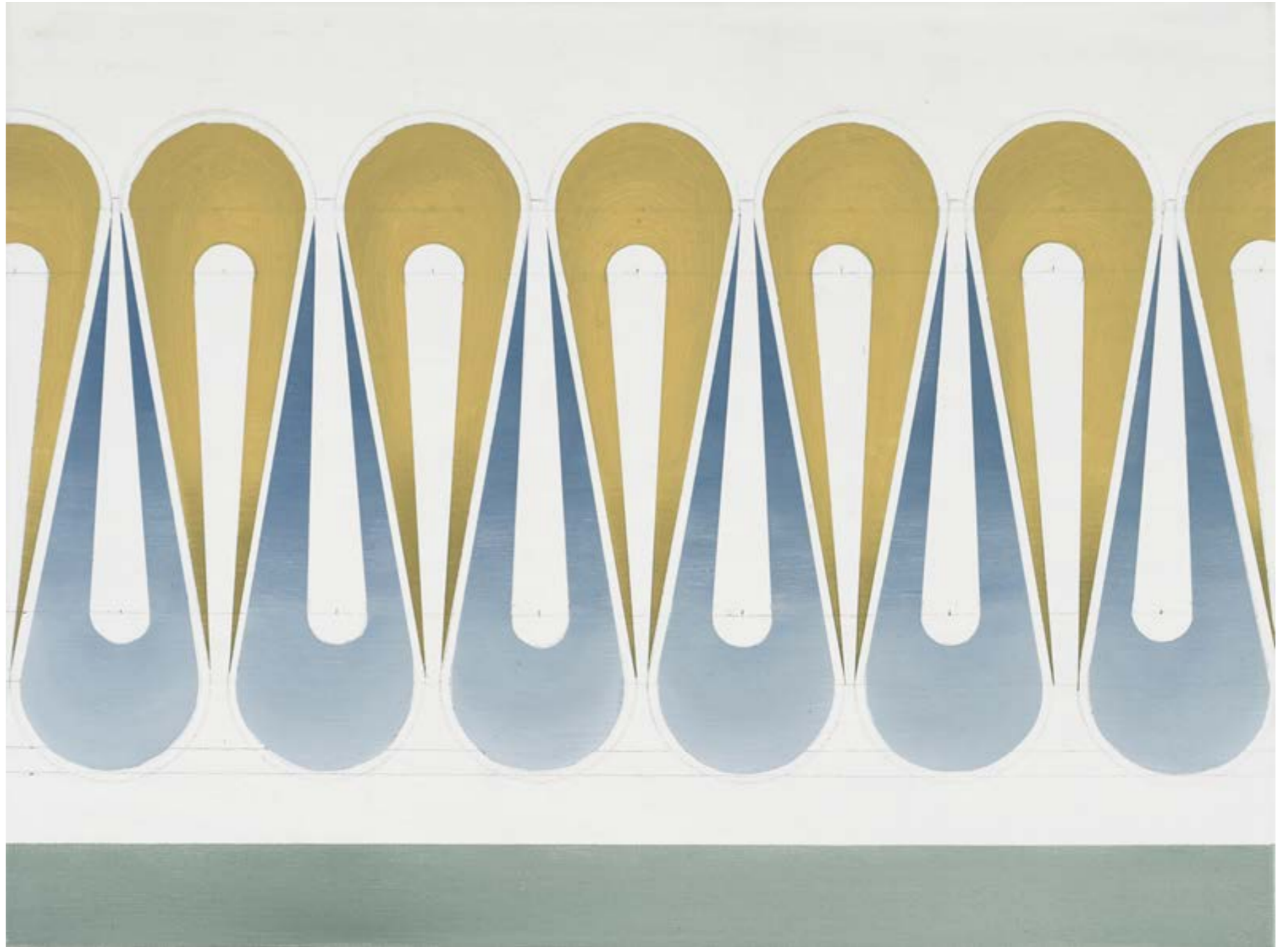
Oil on wood

H x W | 50 x 40 cm | 19.7 x 15.7 inches

2021



JULIUS WEILAND



Schlange

Oil on wood

H x W | 30 x 40 cm | 11.8 x 15.7 inches

2021

JULIUS WEILAND

Heiliger

Oil on canvas

H x W | 105 x 130 cm | 41.3 x 51.2 inches

2021



JULIUS WEILAND

Untitled I

Blown glass, fused

H x W x D | 27 x 26 x 27 cm | 10.6 x 10.2 x 10.6 inches

2018





JULIUS WEILAND

Foggy

Blown glass

H x W x D | 29 x 22 x 18 cm | 11.4 x 8.7 x 7.1 inches

2022





JULIUS WEILAND

Flur

Oil on canvas

H x W | 100 x 70 cm | 39.4 x 27.6 inches

2020



JULIUS WEILAND

Fahrstuhl 2

Oil on wood

H x W | 50 x 40 cm | 19.7 x 15.7 inches

2021



JULIUS WEILAND

PDVN

Oil on wood

H x W | 70 x 50 cm | 27.6 x 19.7 inches

2021



JULIUS WEILAND

Mocca-Eck

Oil on canvas

H x W | 100 x 70 cm | 39.4 x 27.6 inches

2020





JULIUS WEILAND



Growing

Blown glass

H x W x D | 31 x 20 x 18 cm | 12.2 x 7.9 x 7.1 inches

2021

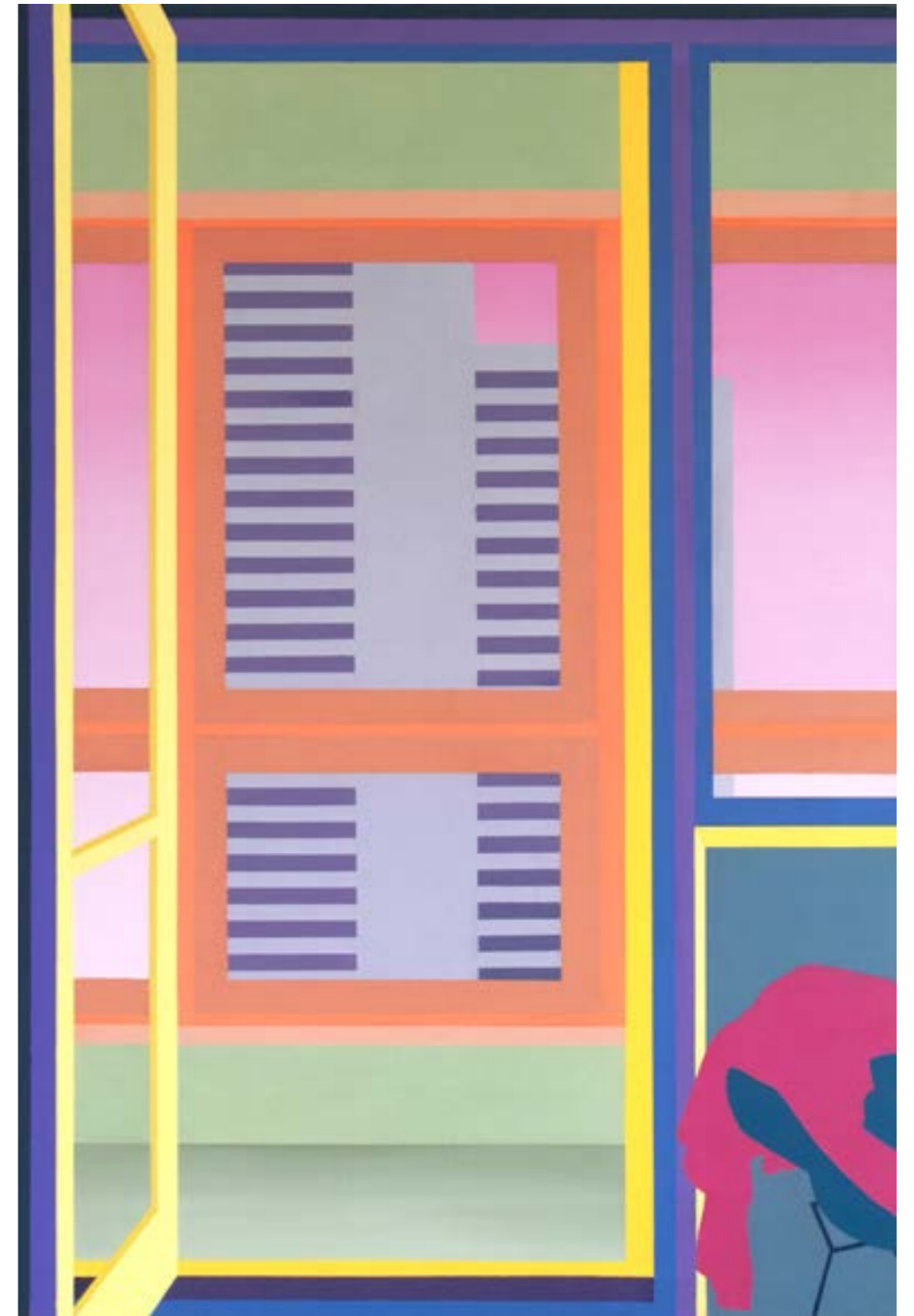
JULIUS WEILAND

View From My Room

Oil on canvas

H x W | 120 x 80 cm | 47.2 x 31.5 inches

2020





JULIUS WEILAND

First Blush

Blown glass

H x W x D | 27 x 22 x 17 cm | 10.6 x 8.7 x 6.6 inches

2020



JULIUS WEILAND

Aurora

Blown glass

H x W x D | 25 x 21 x 15 cm | 9.8 x 8.3 x 5.9 inches

2020



JULIUS WEILAND

Julius Weiland, born in Lübeck/DE in 1971, studied design at the Academy of Fine Arts in Hamburg. In 1998, he received a student scholarship for the Pilchuck Glass School in Stanwood/US-WA. Julius Weiland lives in Berlin

recognitions

- 2017 · Artist Residency | Berlin Glas
- 2011 · 1st Prize | Jutta Cuny-Franz Prize
- 2009 · Guest lecturer | IKKG | Höhr-Grenzhausen | DE
- 2007 · Supporting Award | Jutta Cuny-Franz Prize
- 2006 · Honorable Mention | Coburg Glass Prize
- 2004 · Gold Prize | Kanazawa International Exhibition of Glass

public collections

- Victoria & Albert Museum | London
- Würth Collection | Künzelsau | DE
- Museum Kunstpalast | Glas-Museum Hentrich | Düsseldorf
- Kunstsammlungen der Veste Coburg | DE
- Notojima Glass Art Museum | Notojima | JP
- MusVerre | Sars-Poteries | FR
- Glass Museum Ebeltoft | DK
- Museum Jan van der Togt | Amstelveen | NL
- Museum für Kunst und Gewerbe | Hamburg
- Ernsting Stiftung | Coesfeld-Lette | DE
- Frederiksberg Museum | DK
- Museum Ulm | DE

solo exhibitions

- 2022 · Urban Nature | Iorch+seidel | Berlin
- 2021 · Selected Works | Iorch+seidel | Berlin
 - Julius Weiland | Galerie an der Pinakothek der Moderne | München
- 2020 · It's a kind of magic (with Wolfgang Ganter) | Galerie 21.06. | Ravensburg | DE
 - Transparences (with Jean-Daniel Salvat | Radial Art Contemporain | Strasbourg
- 2019 · Prima Materia (with Wolfgang Ganter) | Kunstverein Kunsthaus Potsdam | Potsdam | DE
 - Glas und Graphik | Europäisches Museum für Modernes Glas | Rödental/Coburg | DE
- 2017 · Cluster and Contour | Iorch+seidel | Berlin
 - Dekor und Deformation | Mies van der Rohe Haus | Berlin
- 2012 · Flux | Litvak Gallery | Tel Aviv
- 2009 · Luminous Space | Ernsting Stiftung | Coesfeld-Lette | DE
 - Lux | Keramikmuseum Westerwald | Höhr-Grenzhausen | DE
- 2008 · High Glide | Museum Kunstpalast | Glas-Museum Hentrich | Düsseldorf
 - The Great Curve | Glass Museum Ebeltoft | DK
 - Modesty Violette | Cisternerne Museum of Modern Glass Art | Copenhagen

group exhibitions

- 2017 · Land Schafft Kunst Biennale | Neuwerder | DE
 - Une Passion Partagée - La Collection Gigi & Marcel Burg | MusVeree | Sars-Poteries | FR
 - EisWasserGlas - Glass Collection Hans Hansen | Gewerbe Museum Winterthur | CH
- 2014 · Trends in Contemporary Glass Art | Himalayas Art Museum | Shanghai
 - Coburg Glass Prize | Kunstsammlungen der Veste Coburg
- 2013 · Translucide | Biennale du Verre / Radial Art Contemporain | Strasbourg
- 2012 · European Glass Context | Bornholm Art Museum | DK
- 2009 · Glass-Trends in Contemporary Glass Sculpture | Litvak Gallery | Tel Aviv
- 2007 · Contemporary Glass of the Würth Collection | Hirschwirtscheuer | Künzelsau | DE
 - International Exhibition of Glass | Kanazawa | JP
- 2006 · Coburg Glass Prize | Kunstsammlungen der Veste Coburg | DE

Julius Weiland

URBAN NATURE

Solo Exhibition

Glass Objects and Paintings

April 14 - May 14, 2022

Venue

temporary showroom at aquabit

Auguststr. 35 | 10119 Berlin



lorch+seidel contemporary

Konstanzer Str. 9 | T + 49 (0)30 978 939 35 | info@lorch-seidel.de

D-10707 Berlin | M + 49 (0)176 235 265 65 | www.lorch-seidel.de